

## Category 6 Keystone Socket T2R45J-C6XU-BK (black) T2R45J-C6XU-WH (white)

Field assembly instructions for installers

Please read instructions carefully prior to assembly. Scan QR code below for more product information.



### Included Parts

1

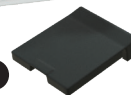


1. Keystone
2. Cable tie
3. Cover (optional)
4. Wire manager

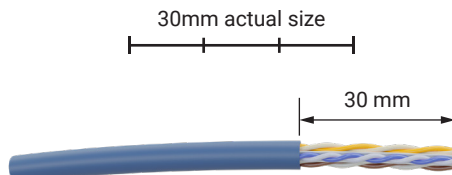
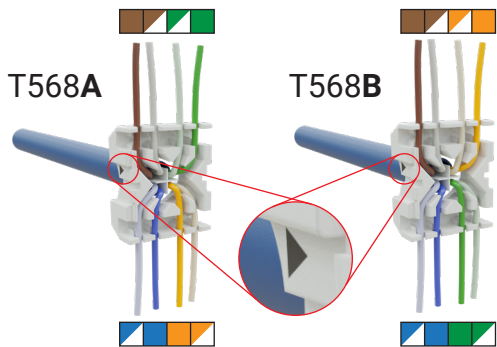
2



3



4



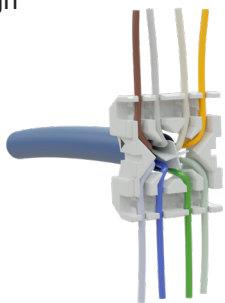
1. Remove the cable jacket.



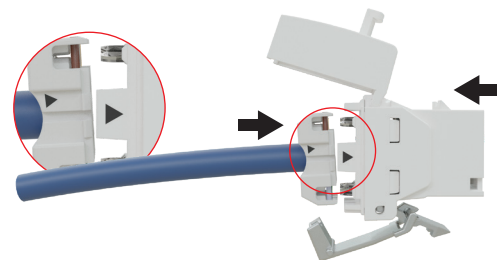
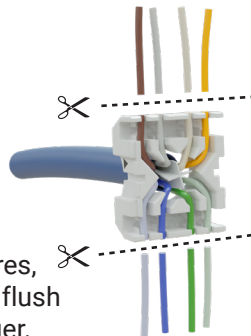
2. Spread pairs, cut off cross separator and untwist pairs.

3. Insert wires through wire manager then secure each wire into its respective position.

(T568B shown here)

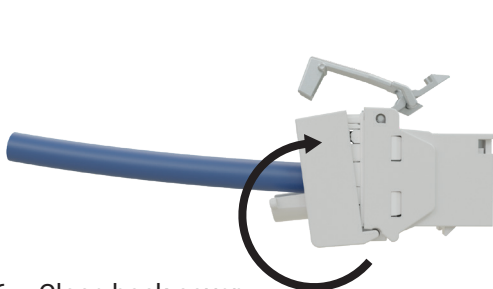


4. Cut off excess wires, taking care to cut flush to the wire manager.

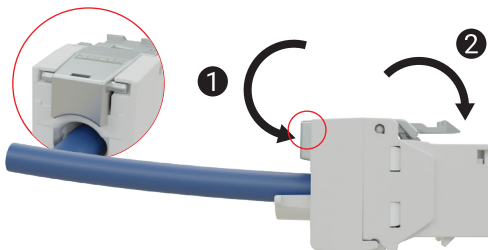


5. Insert wire manager into keystone body, ensuring that the arrow on both are aligned on the same side.

6. Close back cover.



7. Close latch in two steps. Lugs must be in notches as shown above.



8. Affix cable tie and cut off excess.

