



## Key Features

- Built-in 2.4GHz Transceiver Module (utilizing ZigBee® technology).
- Powerful 32bit 533MHz CPU.
- 128Mb of non-volatile Flash memory.
- Three infrared output ports compatible with industry standard IR emitters, blasters, and repeater systems.
- One Multi-purpose I/O port compatible with standard IR emitters, IR repeating systems, and RTI modules (RS-232 and sensing).
- One two-way RS-232 port enables bi-directional communication with compatible electronics.
- Two programmable relay outputs.
- Two voltage sense inputs for monitoring power status of controlled devices.
- Built-in astronomical clock for time-based events and sleep timers.
- Stores all system commands and macros for reliable control.
- Compatible with all Zigbee enabled RTI wireless remote controls and Ethernet enabled RTI In-wall controllers.
- IR output ports incorporate both short-circuit and overload protection.
- Seamless programming using Integration Designer® software.
- Non-volatile Flash memory stores your system configuration even when power is not present.
- Variable IR output on all ports.
- Field upgradable firmware.
- Fast USB 2.0 and Ethernet programming.

## XP-3 Control Processor

The XP-3 is a powerful remote control processor designed to automate and enhance the operation of electronics in smaller scale residential and commercial installations. With a robust 533MHz CPU and 128MB of non-volatile flash memory, the XP-3 improves the whole user experience, providing a much higher degree of control and automation than using a stand-alone remote control. The processor offers a remarkable value with an impressive feature set that is unmatched in its class – including a built-in astronomical time clock for time-based events and support for ZigBee® wireless transmission bi-directional communications with compatible RTI remote controls. The XP-3 delivers rock-solid control and automation of today's sophisticated electronic environments.

## Description

The XP-3 is the quintessential component for any professionally installed electronic system, ensuring an enjoyable user experience. When the XP-3 is incorporated into an RTI control solution, the result is nothing short of exceptional. Boasting a powerful 533MHz CPU and 128MB of non-volatile flash memory, the processor packs a big punch. With a built-in RF transceiver and support for wireless bi-directional communications utilizing robust ZigBee® technology, the XP-3 can provide the user with real-time feedback from supported third-party devices such as music servers, lighting, security, and much more. Now, important data from these devices is available to the user with a simple touch – from current song information to the status of a security system - even the weather forecast!

Unlike simple IR-to-RF converters, the XP-3 stores commands and macros centrally in the processor for more reliable delivery. The XP-3 is loaded with additional features normally reserved for higher-priced processors, such as a built-in astronomical time-clock, Ethernet, RS-232, and relay control. The multi-purpose I/O port will accept a standard IR emitter input or can be used with RTI accessory devices to sense equipment power status or communicate via one-way RS-232. Sense inputs can be used to trigger macros or events from other sub-systems in the environment, such as a garage door opener, security system, or any low-voltage trigger. The XP-3 is the ultimate choice for powerful bi-directional control and automation at a moderate price!

Call 952-253-3100

[www.rticorp.com](http://www.rticorp.com)



It's Under Control®

## Specifications

Power Supply .....	+12V DC, 1A
Wireless Networking.....	IEEE802.15.4 Zigbee® network compliant
RF Frequency Range .....	2.4Ghz - 2.5Ghz
Multi-Purpose Output Port (Port 1).....	One custom 3.5mm 4-conductor jacks
.....	Designed for RTI modules as well as industry-standard IR emitters.
IR Output Ports (Ports 2 & 3).....	Two, 3.5mm jacks
.....	Compatible with industry standard IR emitters
IR Output Drive.....	100mA maximum (per port, adjustable)
Infrared Frequency Transmission Range .....	15kHz - 460kHz
RS-232 Port.....	One, RJ45 Connection
Ethernet Port .....	One, 10/100Base-T
Relays.....	Two, 3 Amps @ 30 VDC or 12V/100mA Trigger
Sense Inputs.....	Two, 3-24VDC
USB Ports.....	One, Programming
Mounting.....	Wall-mount or free standing
Dimensions (W x H x D).....	7.0" (177mm) x 3.0" (76mm) x 1.0" (25mm) ????
Warranty .....	One Year (Parts & Labor)

All specifications subject to change without notice

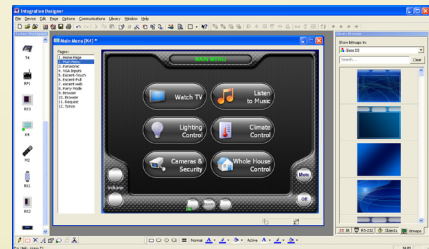
## Accessories

<b>ZM-24</b>	<b>2.4GHz Zigbee® Repeater</b>
<b>RCM-12</b>	<b>Relay Control Module</b>
<b>ECB-5</b>	<b>IR Emitter Connecting Block</b>
<b>CM-232</b>	<b>RS-232 Communication Module</b>
<b>VPS-1</b>	<b>Voltage Power Sensor</b>
<b>SPS-1</b>	<b>Video Sync Power Sensor</b>
<b>vIRsa Mouse</b>	<b>IR Emitter</b>



## Compatible RTI Interface Products

<b>T2-C+</b>	<b>Universal System Controller</b>
<b>T3-V+</b>	<b>Universal System Controller</b>
<b>T4</b>	<b>Universal System Controller</b>
<b>ST-7</b>	<b>Universal System Controller</b>
<b>RK3-V</b>	<b>In-Wall Touchscreen Controller</b>
<b>K4</b>	<b>In-Wall Touchscreen Controller</b>
<b>RK-10</b>	<b>In-Wall Touchscreen Controller</b>



Integration Designer® Programming Software



It's Under Control®

