



Key Features

- Provides a companion remote for use with the RTiPanel and Virtual Panel apps.
- Tracks page changes to stay in sync with one or more apps.
- Dual RF transmission capability uses 433MHz and 2.4GHz (utilizing Zigbee® technology).
- Ergonomic design permits effortless, one-handed operation.
- Completely customizable and programmable.
- Micro USB port in battery compartment for firmware updates.
- Security screw on battery door for hotel applications.
- Inexpensive and requires no direct programming.
- Includes eight buttons that can be custom labeled.
- Integrated switch to select between 433MHz (one-way) and 2.4GHz (two-way) operation.
- Works with any XP series control processor.
- Battery low indicator.
- Uses 4 AAA batteries.

SURFiR Companion Remote

The SURFiR companion remote represents a revolutionary new concept in control - allow users to incorporate Apple® or Android® devices as the main graphical interface for their control system, while adding the convenience of hard buttons for tactile control. This eliminates the numerous screen swipes needed for control tasks that require frequent interaction such as channel changes, DVR control or volume adjustments. The SURFiR allows the user to enjoy the other benefits of their smart phone or tablet device: checking emails, reading news feeds, accessing social media apps, etc. To further enhance the experience for the user, the SURFiR can track which electronic device is being controlled by the RTiPanel app and automatically controls the same. Powerful and intuitive control in an inexpensive package - everything you desire in a companion remote.

Description

What appears to be just a basic remote control is really a programmable, wireless companion remote that works harmoniously with a tablet or smart phone running the RTiPanel App. Designed with the flexibility needed for new and retrofit installations, it has the ability to use either 433MHz or 2.4GHz Zigbee® RF to communicate with any RTI XP series control processor. The SURFiR also requires minimal programming for installers, lowering overall installation costs and making it simple to integrate into any system.

The hallmark of this “companion” remote is the ability to track page changes made on an RTiPanel control app. Now the electronics being controlled by the tablet or smart phone, are being controlled by the SURFiR as it automatically switches to control the correct electronics with no interaction required. An ergonomic design, soft touch buttons and custom labeling options, make it easy to see why the SURFiR is the perfect solution for convenient control - when the iPad is busy doing something else.

Call 952-253-3100

www.rticorp.com



It's Under Control®

Specifications

| | |
|------------------------------------|---|
| Power..... | 4 AAA Alkaline batteries |
| Power Management..... | Automatic On/Off (tilt switch) |
| Radio Frequency Control Range..... | Up to 100 feet (30.5 meters) |
| Radio Frequency Carrier..... | 802.15.4 @ 2.4Ghz (Zigbee® technology) |
| | 433MHz |
| Operating Temperature..... | +32°F to +122°F (0°C to +50°C) |
| Operating Humidity..... | 5% to 95% Non-condensing |
| Nominal Run Time..... | 3 hours minimum, continuous use |
| | (7 days on average use) |
| Standby Time..... | 30 Days |
| Total System Memory..... | 256K Bytes Flash (non-volatile) memory |
| Device Capability..... | Total number of devices is limited only by memory |
| Macro Capability..... | Unlimited steps in a single macro |
| | Total number of macros is limited only by memory |
| | Macro capability on every button |
| Dimensions (L x W x D)..... | 9.5 in (240mm) x 1.8 in (46mm) x .8 in (22mm) |
| Enclosure..... | High-impact molded ABS plastic |
| Weight..... | 7.5 oz. (212g) with batteries |
| Warranty..... | One Year (Parts & Labor) / 90 days on the battery |

All specifications subject to change without notice



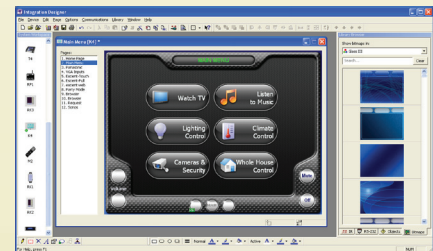
Accessories

| | |
|-------------|-----------------------------|
| RP-1 | Remote Control Processor |
| XP-3 | Advanced Control Processor |
| XP-6 | Advanced Control Processor |
| XP-8 | Advanced Control Processor |
| RM-433 | RF Receiver |
| ZM-24 | 2.4GHz Transceiver Module |
| vIRsa Mouse | IR Emitter |
| ECB-5 | IR Emitter Connecting Block |
| IPE-4 | IR Port Expander |
| CM-232 | RS-232 Communication Module |
| VPS-1 | Voltage Power Sensor |
| ESC-2 | Ethernet Serial Converter |
| RCM-4 | Ethernet Relay Module |
| RCM-12 | Relay Control Module |



Other RTI Products

| | |
|---------------|-----------------------------------|
| Virtual Panel | PC Control Application |
| RTiPanel | Mobile Device Control Application |
| T1-B | Universal System Controller |
| T2-B | Universal System Controller |
| T2-Cs+ | Universal System Controller |
| T2-C+ | Universal System Controller |
| T3-V+ | Universal System Controller |
| T4 | Universal System Controller |
| U2 | Weather Resistant Controller |
| RKM-1 | In-Wall Multi-Room Audio Keypad |
| RK1 | In-Wall Keypad Controller |
| RK2 | In-Wall Touchscreen Controller |
| RK3-V | In-Wall Touchscreen Controller |
| KX-7 | In-Wall Touchscreen Controller |
| RK10 | In-Wall Touchscreen Controller |
| CP-450 | Four Channel Audio Amplifier |
| CP-1650 | Sixteen Channel Audio Amplifier |
| AD-4 | Distributed Audio System |
| AD-8 | Distributed Audio System |



Integration Designer® Programming Software