



RP-4 RF Control Processor

The second generation of RTI's RP-1 processor, the RP-4 is the perfect solution for low-cost, reliable control over A/V and other electronic systems in single-room installations such as home theaters, media centers, and bedrooms. The cost-effective RP-4 boasts an integrated 433-MHz RF receiver, four assignable IR ports with adjustable output, two voltage sense inputs, and two programmable relay outputs; all in one compact package. Perfect for use with any RTI 433-MHz wireless interface, the processor also supports one-way control via the RTiPanel app, allowing users to incorporate their smartphones and tablets easily into their control system.*

With the RP-4, A/V components and other equipment can be hidden away in a closet for a clean, professional look. The processor stores all system commands and macros for rock-solid reliability, providing a powerful alternative to IR repeater systems which can suffer from inconsistent performance.

Key Features

- Stores all system commands and macros for reliable control.
- Integrated 433MHz RF antenna.
- Supports RTiPanel App for one-way control via smart phones and tablets.*
- Four infrared ports with routing and output adjustment.
- Infrared ports compatible with industry standard IR emitters and IR expansion devices.
- Two power sensing inputs for monitoring equipment status.
- Two programmable relays provide contact closure for TV lifts, shades, projection screens etc.
- Works with all RTI 433MHz wireless remotes.**
- RF signal reception and Ethernet activity LEDs.
- Simple, efficient programming using Integration Designer® software.
- Install free-standing or wall mount using included mounting bracket.
- Non-volatile Flash memory stores your system configuration even when power is not present.
- USB and Ethernet programming.

Accessories



IPE-4
4-Port IR Port Expander



ECB-5
5-Port IR Connecting Block



vIRsa Mouse®
Infrared Emitter

Call 952-253-3100

www.rticorp.com



It's Under Control®

Specifications

Power Supply.....	+12VDC, 1A
RF Receiver Carrier Frequency.....	433 MHz
Infrared Transmission Bandwidth	15kHz - 460kHz
IR Output Ports.....	Four (4), 3.5mm jacks
IR Output Drive.....	100mA maximum (per port, adjustable)
Ethernet Port.....	One, RJ45 Connection, 10/100Base-T
Relays.....	Two, +30VDC, 5A max
Sense Inputs.....	Two, 3-24VDC
Mounting.....	Wall-mount or free standing
Dimensions (W x H x D).....	7.0" (175mm) x 3.0" (76mm) x 1.0" (25mm)
.....	(Dimension does not include antenna or connectors)
Weight	6.7 oz. (190g)
Warranty.....	One Year (Parts & Labor)

All Specifications subject to change without notice.

* IMPORTANT INSTALLATION NOTES:

The RP-4 is programmed and operates similar to an RP-1. If more robust capabilities are required, then an XP processor should be used.

- RP-4 does NOT support:
 - > RTI wired interfaces (In-wall touchpanels, keypads, etc).
 - > RTI Ethernet expansion modules (ESC2, PCM4, RCM4).
 - > Additional RM-433 433MHz RF antennas and ZM-24 Zigbee® transceivers.
 - > Two-way drivers, event programming and master/slave mode.
- RP-4 supports one-way control via the RTiPanel App on Apple iOS® devices only (Android devices and Virtual Panel are NOT supported currently).



RP-4 Control Processor

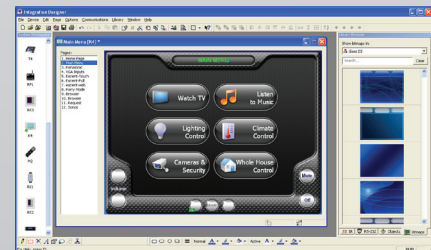
Accessories

ECB-5	IR Connecting Block
IPE-4	IR Port Expander
vIRsa Mouse	IR Emitter



Other RTI Products

Virtual Panel	PC Software Interface (App)
RTiPanel	Mobile Software Interface (App)
SURFiR	Companion Remote Control
T1-B+	Remote Control
T2-Cs+	Remote Control
T2i	Remote Control
T2x	Remote Control
T3-V+	Remote Control
RK1+	2-4-8 Button In-Wall Keypad
RKM-1+	In-Wall Audio Distribution Keypad
KX2	2.8 inch In-Wall Touchpanel Keypad
RK3-V	3.5 inch In-Wall Touchpanel Keypad
KX7	7 inch In-Wall Touchpanel
CX7	7 inch Countertop Touchpanel
RP-4	RF Control Processor
AD-4x	Distributed Audio System
AD-8x	Distributed Audio System
RTiDock	Dock for Apple iPod®
CP-450	4 Channel Amplifier
CP-1650	16 Channel Amplifier
XP-3	Advanced Control Processor
XP-6	Advanced Control Processor
XP-8s	Advanced Control Processor
CB-8	Touchpanel Connecting Block
CM-232	RS-232 Communication Module
CPB-1	Control Port Connecting Block
ESC-2	Ethernet Serial Converter
PCM-4	Port Control Module
RCM-4	Ethernet Relay Module



Integration Designer® Programming Software

5775 12th Avenue East, Suite 180, Shakopee, MN 55379
 PH: (952) 253-3100 • Website: www.rticorp.com

RTI
 It's Under Control®