



White Bezel



Black Bezel

KX2 In-Wall Controller

The KX2 in-wall controller has a clean, sleek design with twelve programmable hard buttons and a 2.8" color touchscreen. The hard buttons and graphic interface are fully programmable using RTI's Integration Designer® software for full control of electronics throughout the building. A built-in infrared output port allows direct control or get two-way control when used with an RTI XP series control processor. In addition, the unit's integrated 10/100Base-T Ethernet port with Power-over-Ethernet (POE) provides the flexibility to accommodate any installation.

Key Features

- Fully customizable 2.8" touchscreen display and twelve assignable/programmable buttons.
- QVGA resolution (240w x 320h) TFT LCD to display custom buttons, text and graphics.
- Integrated 10/100Base-T Ethernet port with Power-over-Ethernet.
- IR output drives up to 1000 feet of wire.
- Proximity sensor automatically wakes the unit up when approached by the user and an ambient light sensor adjusts the brightness.
- Integrated mounting wings for easy installation in retrofit installs.
- Fits in a 4"x4" square electrical junction box (See important information reverse side of this page).**
- Ships with stylish, low-profile white bezel - bezels also available in black and light almond.
- Faceplate and buttons are black with a glossy finish.
- Optional modules/processors for voltage sensing, relays and advanced two-way control.
- USB and Ethernet programming.

Call 952-253-3100

www.rticorp.com



It's Under Control®

Specifications

Power.....	+9VDC to +16VDC, 1A max
Power Management.....	Adjustable backlight brightness, Ambient light sensor
.....	Proximity sensor
Touchscreen Display.....	High-brightness color TFT LCD
.....	QVGA (240w x 320h pixels) with 65K colors
.....	Integrated high-resolution resistive touchscreen
Display Size.....	2.8" (71mm) diagonal
Display Backlight.....	Dual CCFL, 350nit
Infrared Output.....	Through control port, 200mA output
.....	Drives up to 1000 ft (300 m) of wire
Ethernet Port.....	10/100 Base-T with Power-over-Ethernet
Operating Temperature.....	+32°F to +122°F (0°C to +50°C)
Operating Humidity.....	5% to 95% Non-condensing
Total System Memory.....	32MBytes Flash (non-volatile) memory
Device Capability.....	Total number of devices is limited only by memory
Macro Capability.....	Unlimited steps in a single macro
.....	Total number of macros is limited only by memory
.....	Macro capability on every button
Communications.....	USB programming port
Enclosure.....	High-impact molded ABS plastic
Mounting.....	Integrated mounting wings, or screws through front bezel
Front Plate Dimensions (H x W).....	4.4 in (112mm) x 4.6 in (117mm)
Installation Cut-Out (H x W).....	3.7 in (94mm) x 3.7 in (94mm)
Total Depth in Wall.....	1.2 in (31mm) Plus cables
Weight.....	7.5 oz (212g)
Warranty.....	One Year (Parts & Labor)

* All Specifications subject to change without notice.

** The KX2 uses a standard 4"x 4" electrical junction box. These should be available at most hardware stores or electrical supply stores online (ex. Granger.com).

NOTES:

- A dual gang outlet box will NOT work.
- The KX2 has .38" thick corner tabs, making the KX2 protrude .38" from the front edge of the junction box. Therefore, the electrical box should be mounted flush with the wall stud. Typically wall sheeting materials like drywall are ½" or thicker, allowing the KX2 to be flush with the wall sheeting. If the wall sheeting is thinner than .38", the junction box will need to be mounted set back.
- Use #8 – 32 flat head screws.
- Box should be 1.5" minimum depth.



Electrical Junction Box
4" h x 4" w x 1.5" d



The KX2 hard buttons (12) may be custom laser etched using the RTI Laser Shark service.

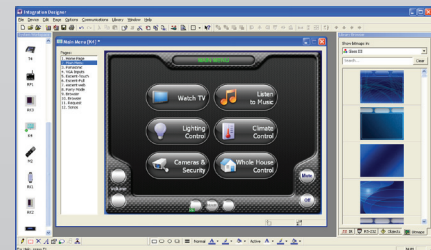
Accessories

XP-3	Advanced Control Processor
XP-6	Advanced Control Processor
XP-8s	Advanced Control Processor
CB-8	Touchpanel Connecting Block
CM-232	RS-232 Communication Module
CPB-1	Control Port Connecting Block
ECB-5	IR Connecting Block
ESC-2	Ethernet Serial Converter
IPE-4	IR Port Expander
PCM-4	Port Control Module
RCM-4	Ethernet Relay Module
vIRsa Mouse	IR Emitter



Other RTI Products

Virtual Panel	PC Control Application
RTiPanel	Mobile Device Control Application
SURFiR	Companion Remote for RTiPanel
T1-B+	Universal System Controller
T2-Cs+	Universal System Controller
T3-V+	Universal System Controller
U2	Weather Resistant Controller
RKM-1+	In-Wall Multi-Room Audio Keypad
RK1	In-Wall Keypad Controller
KX2	In-Wall Touchscreen Controller
RK3V	In-Wall Touchscreen Controller
KX7	In-Wall Touchscreen Controller
RK10	In-Wall Touchscreen Controller
RP-1	Remote Control Processor
XP-3	Remote Control Processor
XP-6	Remote Control Processor
XP-8s	Remote Control Processor
AD-4x	Distributed Audio System
AD-8x	Distributed Audio System



Integration Designer® Programming Software

5775 12th Avenue East, Suite 180, Shakopee, MN 55379
PH: (952) 253-3100 • Website: www.rticorp.com

RTI
It's Under Control®